

TRAVERSE
THEATRE

TRAV FEST 22

BOOKING TICKETS

Online traverse.co.uk
By Phone 0131 228 1404
In Person 10 Cambridge Street,
Edinburgh, EH1 2ED

BOX OFFICE OPENING TIMES

June – July Mon – Fri: 10am–6pm (or until performance start time). Sat – Sun: 2 hours before performance start time.

August Daily from 1 hour before first performance, until start time of final performance.

GROUP BOOKINGS

Groups of 8 or more receive a discount of 10% on their booking, subject to availability. This will automatically apply at checkout when booking online. If you have any specific requirements, please contact boxoffice@traverse.co.uk.

SCHOOL BOOKINGS

Give us a call or email boxoffice@traverse.co.uk to make any school enquiries, to discuss what you need, and to book your tickets.

REFUNDS AND EXCHANGES

We'll refund your tickets if a show is cancelled or a time or date change means you can no longer attend. We can exchange tickets for £1 a ticket (up to a maximum of £5), with at least 24 hours' notice, for another performance of the same production. Please note we are unable to refund or exchange any tickets booked through the Fringe Box Office.

VENUE KEY

T1 Traverse 1 **T2** Traverse 2

GET INVOLVED

#TravFest22
[@traversetheatre](https://twitter.com/traversetheatre)



0131 228 1404
traverse.co.uk

LATECOMERS

Latecomers may not be admitted. Please arrive in plenty of time for the start of the performance.

TICKET COLLECTION

Tickets can be collected free of charge from the Box Office. E-tickets can be printed for collection at Box Office with advance notice. Please email boxoffice@traverse.co.uk.

CONCESSION TICKETS

Standard Concession is available for

- Over 65s
- People with disabilities (assistants accompanying people with disabilities go free)
- Members of Entertainment Unions and the Scottish Society of Playwrights

Under 30s/Student Concession

- Available to everyone under the age of 30 (proof of age required)
- Young Scot cardholders
- Students (valid student ID required)

Other Concessions

- Job Seekers Allowance, Employment Support Allowance or Universal Credit

Exclusions or conditions may apply to all discounts. Please check with the Box Office when booking.



#TRAVFEST22 AT A GLANCE

TRAVERSE 1

31 JUL – 28 AUG
EXODUS
by Uma Nada-Rajah p10

2 – 28 AUG
BLOOD HARMONY
Created by Matthew Bulgo,
Jonnie Riordan &
Jess Williams p11



5 – 28 AUG
WILF by James Ley p4

4 – 28 AUG
THE LAST RETURN
by Sonya Kelly p12

9 – 14 AUG
SHEDINBURGH GALA PERFORMANCES ... p23

16 – 28 AUG
ONE-WOMAN SHOW
by Liz Kingsman p13

22 AUG
FIRST LOOK READING: THE GRAND OPERA HOUSE HOTEL
by Isobel McArthur p29

22 AUG
PANEL AND Q&A: THE WRITER-COMPOSER RELATIONSHIP p29

TRAVERSE 2



30 JUL – 28 AUG
THIS IS PARADISE
by Michael John O'Neill p6

4 – 28 AUG
HAPPY MEAL
by Tabby Lamb p14

9 – 21 AUG
ALOK by ALOK p19

4 – 28 AUG
BLOODY ELLE – A GIG MUSICAL
by Lauryn Redding p20

4 – 28 AUG
PSYCHODRAMA
by Matt Wilkinson p21

15 AUG
TALK & NETWORKING EVENT: CREATING SPACE WITH PLAYWRIGHTS' STUDIO SCOTLAND p28

22 AUG
SCREENING: MOVE
by Julia Taudevin p29

ELSEWHERE

TRAVERSE FOYER

4 – 28 AUG
PLAYWRIGHTS' STUDIO SCOTLAND BOOKSHOP

EDINBURGH CITY CENTRE

4 – 28 AUG
EAVESDROPPING (WALK THIS PLAY®)
by Hannah Lavery &
Sarah MacGillivray p22

TRAVERSE BAR



15 AUG
MYTRAVERSE SHARING SESSION p28

15 AUG
MYTRAVERSE LAUNCH EVENT p28

Full diary on pages 15-18

WELCOME TO TRAVFEST 2022



Neil John Gibson and Michael Dylan in *Wild*. Photo: Mihaela Bodlovic.

TravFest 2022 is a celebration of connections and, of course, brilliant stories that entertain. Stories have heart. They give us hope and a sense of place.

They also challenge, provoke, and educate – and in a polarising world, start the conversations we need to have. Most of all, stories strengthen communities, and we're delighted you're here with us. We welcome you along for the ride.

It is an exciting road ahead as we get set to mark 60 triumphant – and illustrious! – years of the Traverse next year. So this festival programme is not only a statement of who we are, but also of where we're going. We're sixty years young, and new stories for now remain at the centre of what we do.

NEW STORIES FOR A NEW ERA.

WELCOME



Image: Laurence Wigram

WILF

By James Ley

Director Gareth Nicholls **Set & Costume Designer** Becky Minto **Lighting Designer** Renny Robertson **Composer & Sound Designer** Susan Bear **Costume Supervisor** Sophie Ferguson **Choreographer** Emily Jane Boyle **Dramaturg** Eleanor White

Fri 5 - Sun 28 Aug
Previews Fri 5 Aug & Sat 6 Aug

Preview tickets
Full price £17
Standard concession £12

Tickets
Full price £22
Standard concession £17
Under 30s / Student £15
Unwaged £5

RUNNING TIME: 1h20m
NOTE: Strong language and adult themes throughout. Frequent graphic references to sex and drug use. Partial nudity.
The Traverse Theatre is funded by Creative Scotland and The City of Edinburgh Council, with additional support from The Scottish Government Performing Arts Venues Relief Fund.

Calvin is going to revolutionise his life. Escape his abusive boyfriend, detonate his inner sex bomb, see (and shag) the world! Now he's found his partner in crime in Wilf, a rusty Volkswagen Polo. Together they hit the road on a wild ride of greasy takeaways, graveyard orgies and banging 80s power ballads – ending up somewhere they never imagined they'd go...

This riotous, heartfelt play takes audiences on a hilarious and unapologetic ride through Scotland as Calvin and Wilf attempt to escape loneliness, cope with mental illness and learn to love themselves, with the help of one another.

For access performances, see the Diary on pages 15-18.

'A filthy and brilliantly-paced joyride' ★★★★★
THE SCOTSMAN

'Brutally dark but hilarious' ★★★★★
THE STAGE

	P	Fri 5 7pm	P	Sat 6 11am	Sun 7 6pm
Tue 9 3pm	Wed 10 6pm	Thu 11 9.15pm	Fri 12 12pm	Sat 13 3pm	Sun 14 6pm
Tue 16 7.30pm	Wed 17 10.30am	Thu 18 1.45pm	Fri 19 4.30pm	Sat 20 7.30pm	Sun 21 10.30am
Tue 23 1.45pm	Wed 24 4.30pm	Thu 25 7.30pm	Fri 26 10.30am	Sat 27 1.45pm	Sun 28 4.30pm



LGBTQ+ **MENTAL HEALTH**
DARK COMEDY **DRAMA**

FASTEN YOUR SEATBELTS AS WILF RETURNS IN FULL GLORY TO THE TRAVERSE STAGE...

Not even lockdowns or a pandemic will dull the Traverse's determination to bring new work to Edinburgh and the world, with our original cast and creative team continuing work behind the scenes to get *Wilf* back into gear and onstage!

Commissioning new shows and telling new stories is what we do, giving everyone a chance to stand up and have their voices heard. We're at the forefront of the Edinburgh Festivals and shows like *Wilf*, no matter how many speedbumps we hit, will always have a home at the Traverse!



HELP MAKE THEATRE THRIVE!

Visit traverse.co.uk/support-us

Irene Allan and Michael Dylan in *Wilf*.
Photo: Mihaela Bodlovic.



Photo: Lara Cappell Design: Michael Cranston

THIS IS PARADISE

By Michael John O'Neill

Director Katherine Nesbitt **Lighting Design** Colin Grenfell **Composition & Sound Design** Danny Krass
Designer Lulu Tam **Cast** Amy Molloy

Sat 30 Jul – Sun 28 Aug
Previews Sat 30 Jul & Thu 4 Aug

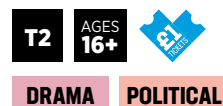
Preview tickets
 Full price £17
 Standard concession £12

Tickets
 Full price £22
 Standard concession £17
 Under 30s / Student £15
 Unwaged £5

RUNNING TIME: 1h30m
NOTE: Contains strong language, adult themes, depictions of a coercive relationship and references to baby loss.

The Traverse Theatre is funded by Creative Scotland and The City of Edinburgh Council, with additional support from The Scottish Government Performing Arts Venues Relief Fund.

Part of the Made in Scotland showcase
madeinscotlandshowcase.com



10 April 1998, Belfast. The Good Friday Agreement is signed, promising peace to Northern Ireland. Away from all that pageantry, a river is rising in Kate. When a phone call from a desperate young woman compels Kate to return to a relationship she hoped was left in another life, she embarks on a journey which risks breaking the uneasy peace she has since made for herself.

A powerful, intimate and dream-like monologue shot through with the vibrancy of living, *This is Paradise* explores the ramifications of what happens when one woman is asked to rescue the man who promised to destroy her – and what it takes to begin again.

For access performances, see the Diary on pages 15-18.

'Fiercely comic as well as tragic' ★★★★★

THE SCOTSMAN

				P Sun 30 7pm	Sun 31
Tue 2	Wed 3	P Thu 4 6.30pm	Fri 5 1pm	Sat 6 3.30pm	Sun 7 6.30pm
Tue 9 11am	Wed 10 1pm	Thu 11 4pm	Fri 12 6.30pm	Sat 13 11am	Sun 14 1pm
Tue 16 4pm	Wed 17 6.30pm	Thu 18 11am	Fri 19 1pm	Sat 20 4pm	Sun 21 6.30pm
Tue 23 11am	Wed 24 1pm	Thu 25 4pm	Fri 26 6.30pm	Sat 27 11am	Sun 28 1pm

FROM PAGE TO STAGE...

This is Paradise started life with the Traverse as an open script submission, anonymously selected from over 600 scripts for further development. Together with writer Michael John O'Neill we've worked to bring this powerful story to life.



2021

This is Paradise had its first public outing as a digital reading, and with such a strong audience response was swiftly back in development ahead of a limited run as part of our TravFest21 programme. It was also showcased in Traverse 3 – our digital venue – for those who were unable to travel to Edinburgh last year, and went on to win the coveted Popcorn Award for New Writing.



2022 FESTIVAL

Now *This is Paradise* is back with a new design and full run at TravFest22, ready to be enjoyed by international audiences at the largest arts festival in the world.



THE FUTURE

The journey doesn't stop here... *This is Paradise* has its sights set on playing across the UK, and the world. We need YOU to help get stories like *This is Paradise* on their feet and in front of audiences. If you can, please donate today and help make the theatre of tomorrow!

Top: Writer, Michael John O'Neill; Middle: Director, Katherine Nesbitt; Bottom: Performer, Amy Molloy.



SUPPORT NEW WRITING

Are you passionate about new work and new writers? Help us create opportunities by donating today.

MAKING NEW WORK

Become part of the page to stage journey and join the Traverse in the wings to get closer to the heart of the organisation and our work. Become a supporter and choose the right giving level for you.



STARTING AT £15 PER MONTH, YOU CAN PLAY A STARRING ROLE IN ENSURING THE TRAVERSE CONTINUES TO THRIVE.

To donate or get more information on supporting the Traverse, please visit traverse.co.uk/support-us or get in touch with Head of Business Development, Ellen Gledhill on ellen.gledhill@traverse.co.uk

NEW COMMISSIONS

We champion performance, experience and discovery through our new work commissions. We craft powerful stories that challenge expectation to make sense of the ever-changing world around us.



ART

COMING TOGETHER

A melting pot for artists and audiences to meet as one, we create opportunities to have new experiences together. An international hub for creativity, we stage work that inspires, excites and provokes dynamic conversations about who we are now.



AUDIENCE

CULTURE

REPRESENTING SCOTTISH THEATRE

The Traverse meets the world in Edinburgh, and takes Edinburgh to the world. We are the theatrical heart of our city's festivals and extend our reach throughout the year by touring nationally and internationally.



COMMUNITY

TALENT DISCOVERY & DEVELOPMENT

Everyone has a story tell, so we provide the platform and tools to help people create. With artist-led projects like Traverse Young Writers and Breakthrough Writers Launchpad, we create spaces for stories to take form and grow.

WORLD PREMIERE
NATIONAL THEATRE OF SCOTLAND



Image: Pete Dibdin

EXODUS

By Uma Nada-Rajah

Director Debbie Hannan **Set & Costume Design** Alisa Kalyanova **Composer/Sound Designer** Mark Melville
Lighting Designer Laura Howard **Video Designer** Rob Willoughby **Cast** Aryana Ramkhalawon,
Anna Russell-Martin, Habiba Saleh, Sophie Steer

Sun 31 Jul – Sun 28 Aug
Previews Sun 31 Jul & Sat 6 Aug

Preview tickets

Full price £17
Standard concession £12

Tickets

Full price £22
Standard concession £17
Under 30s / Student £15
Unwaged £5

RUNNING TIME: 1h25m

NOTE: Contains depictions of violence to others and harm to infants, strong language, adult themes, explicit references to sex, references to the process of seeking asylum, references to experiences of homophobia and systemic racism and references to suicide.

Part of the Made in Scotland showcase.
madeinscotlandshowcase.com



How far will a politician go?

In her bid to become the country's leader, Home Secretary Asiya Rao prepares to make a major policy announcement that will establish her as the front-runner of the political race. Alongside her calculating advisor Phoebe, she embarks on a publicity stunt starting with a photo shoot by the white cliffs of Dover. But rather than the tide washing her reputation clean, something else washes up...

An omen or an opportunity? The women are determined to keep their eyes on the prize, no matter the cost, even if it's a human one.

For access performances, see the Diary on pages 15-18.

					P	Sun 31 7pm
Tue 2	Wed 3	Thu 4	Fri 5	Sat 6 2.30pm	Sun 7 2.30pm	
Tue 9 6pm	Wed 10 9.15pm	Thu 11 12pm	Fri 12 3pm	Sat 13 6pm	Sun 14 9.15pm	
Tue 16 10.30am	Wed 17 1.15pm	Thu 18 4.30pm	Fri 19 7.30pm	Sat 20 10.30am	Sun 21 1.15pm	
Tue 23 4.30pm	Wed 24 7.30pm	Thu 25 10.30am	Fri 26 1.15pm	Sat 27 4.30pm	Sun 28 7.30pm	

SCOTTISH PREMIERE
COMMISSIONED AND PRODUCED BY THICKSKIN AND LAWRENCE BATLEY THEATRE IN CO-PRODUCTION
WITH WATFORD PALACE THEATRE AND WALES MILLENNIUM CENTRE AND SUPPORTED BY THE LOWRY



Photo: David Lindsay Design: Steph Pyne

BLOOD HARMONY

Created by Matthew Bulgo, Jonnie Riordan & Jess Williams

Direction & Choreography Jonnie Riordan & Jess Williams
Musical Direction & Musical Arrangements Kate Marlais **Composers** The Staves
Set & Costume Design Hayley Grindle **Sound Design** Charlotte Barber **Lighting Design** Charly Dunford

Tue 2 – Sun 28 Aug
Previews Tue 2 & Sat 6 Aug

Preview tickets

Full price £17
Standard concession £12

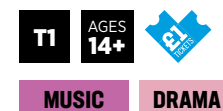
Tickets

Full price £22
Standard concession £17
Under 30s / Student £15
Unwaged £5

RUNNING TIME: 1h30m

NOTE: Adult themes, strong language and reference to use of drugs and alcohol.

Supported using public funding by the National Lottery through Arts Council England, Backstage Trust and Watford Borough Council.



Soaring music by Atlantic Records artists, The Staves, combines with bold new writing and dynamic physicality in *Blood Harmony*, an uplifting and powerful new play with songs about love, loss and legacy.

A fractured trio of sisters are pulled back together with news that turns their worlds upside down. When it feels like your world has come to a stop, how do you find a way to keep moving forward? Award-winning theatre company ThickSkin make a thrilling return to the stage with this highly visual and musically charged production. Created by the company behind the five star hit show *How Not To Drown*.

For access performances visit traverse.co.uk/whats-on/access-listings

'Truly stunning' ★★★★★ **THE SCOTSMAN ON HOW NOT TO DROWN**

'Poetically powerful' ★★★★★ **THE TIMES ON CHALK FARM**

P	Tue 2 7pm	Wed 3	Thu 4	Fri 5	Sat 6 6pm	Sun 7 9.30pm
	Tue 9 12pm	Wed 10 3pm	Thu 11 6pm	Fri 12 9.15pm	Sat 13 12pm	Sun 14 3pm
	Tue 16 4.30pm	Wed 17 7.30pm	Thu 18 10.30am	Fri 19 1.30pm	Sat 20 4.30pm	Sun 21 7.30pm
	Tue 23 10.30am	Wed 24 1.30pm	Thu 25 4.30pm	Fri 26 7.30pm	Sat 27 10.30am	Sun 28 1.30pm

UK PREMIERE
DRUID



THE LAST RETURN

By Sonya Kelly

Director Sara Joyce **Set & Costume Design** Francis O'Connor **Lighting Design** Amy Mae
Sound Design & Composition Michael John McCarthy **Movement** Jessica and Megan Kennedy (Junk Ensemble) **Dramatherapy** Wabriya King **Associate Costume Designer** Clíodhna Hallissey **Assistant Director** Katie O'Halloran

Thu 4 – Sun 28 Aug
Previews Thu 4 & Sat 6 Aug

Preview tickets
Full price £17
Standard concession £12

Tickets
Full price £22
Standard concession £17
Under 30s / Student £15
Unwaged £5

RUNNING TIME: 1h20m

NOTE: May contain adult themes, strong language, strobe lighting and depictions of violence to others.

Druid gratefully acknowledges the support of The Arts Council of Ireland and Culture Ireland.

Not all good things come to those who wait.

One final night. One last chance. Five people queue for a ticket to the hottest show in town. All they must do is simply wait in line. But what in life is ever simple? Who will triumph, who will fail, and who will walk away with... *The Last Return*? A new play by acclaimed playwright Sonya Kelly (*Once Upon a Bridge*, *How to Keep an Alien*), *The Last Return* is a thrilling comedy about conflict, peace and the pursuit of territory at any cost.

For access performances visit traverse.co.uk/whats-on/access-listings

'Inventive and delightfully magnetic theatre' ★★★★★

THE HERALD ON HOW TO KEEP AN ALIEN

'Ireland's most prestigious theatre company'

IRISH INDEPENDENT ON DRUID



DRAMA **SATIRE**
COMEDY

		P Thu 4 7pm	Fri 5	P Sat 6 9.30pm	Sun 7 11am
Tue 9 9.15pm	Wed 10 12pm	Thu 11 3pm	Fri 12 6pm	Sat 13 9.15pm	Sun 14 12pm
Tue 16 1.30pm	Wed 17 4.30pm	Thu 18 7.30pm	Fri 19 10.30am	Sat 20 1.15pm	Sun 21 4.30pm
Tue 23 7.30pm	Wed 24 10.30am	Thu 25 1.15pm	Fri 26 4.30pm	Sat 27 7.30pm	Sun 28 10.30am

SCOTTISH PREMIERE
COUNTRY MILE PRODUCTIONS



Image: James Deacon

ONE-WOMAN SHOW

By Liz Kingsman

Writer-Performer Liz Kingsman **Direction** Adam Brace **Lighting Design** Daniel Carter-Brennan
Choreography Josh Lay **Costume & Set Associate** Emma Hollows **Lighting Technician** Jake Wood

Tue 16 – Sun 28 Aug
Preview Tue 16 Aug

Preview tickets
Full price £17
Standard concession £12

Tickets
Full price £22
Standard concession £17
Under 30s / Student £15
Unwaged £5

RUNNING TIME: 1h10m

NOTE: Strobe lighting and full blackout.



COMEDY

The Guardian's #1 Comedy Show of 2021 comes to the Fringe for a limited run. A bold, irreverent, raw, moving and triumphant celebration of adjectives, this blurb will nail down nothing.

Times' Top 5 Comedy Shows of 2021.

Telegraph's Best Cultural Events of 2021.

'A witty and clever spoof that is endlessly entertaining and chock-full of gags'

THE ARTS DESK

'This social satire is a breathless, blistering, pitch-perfect comic critique of contemporary archetypes and modern manners'

EVENING STANDARD

P Tue 16 10pm	Wed 17 10pm	Thu 18 10pm	Fri 19 10pm	Sat 20 10pm	Sun 21 10pm
Tue 23 10pm	Wed 24 10pm	Thu 25 10pm	Fri 26 10pm	Sat 27 10pm	Sun 28 10pm

SMOHS

WORLD PREMIERE
ROOTS / THEATRE ROYAL
PLYMOUTH WITH ETT AND
OXFORD PLAYHOUSE



Photo: Michael Wharley. Design: Rebecca Pitt

HAPPY MEAL

By Tabby Lamb

Writer Tabby Lamb (she/they) **Director** Jamie Fletcher (she/her) **Designer** Ben Stones (he/him)
Video Daniel Denton (he/him) **Lighting** Kieron Johnson (they/them) **Sound** Eliyana Evans (she/her)
Dramaturg Jennifer Bakst (she/her) **Production Manager** Shawna Cadence (she/her)
Producer Steven Atkinson (he/him) **Cast** Allie Daniel (she/her) and Sam Crerar (they/he)

Thu 4 – Sun 28 Aug
Preview Thu 4 Aug

Preview tickets

Full price £17
Standard concession £12

Tickets

Full price £22
Standard concession £17
Under 30s / Student £15
Unwaged £5

RUNNING TIME: 1h20m

NOTE: Mentions of the trans medical system.
Arts Council England, Backstage Trust.

Join us for an online show irl. Travel back to the quaint days of dial up and MSN, where you'll follow two strangers on their journeys to become who they always were. A funny, moving and nostalgic story of transition.

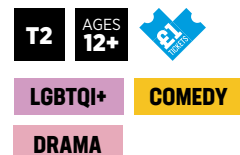
From teen to adult, from MySpace to TikTok, from cis to trans.

The world premiere of *Happy Meal* is a joyful queer rom-com where Millennial meets Gen Z and change is all around. Exhilaratingly staged by Jamie Fletcher, fresh from her acclaimed production of *Hedwig and the Angry Inch*.

For access performances visit traverse.co.uk/whats-on/access-listings

'Pick of The Fringe' THE TIMES AND BROADWAY WORLD

#queerhappy meal



		P Thu 4 10.30am	Fri 5 10.30am	Sat 6 1pm	Sun 7 3.30pm
Tue 9 6.30pm	Wed 10 10.30am	Thu 11 1.30pm	Fri 12 4pm	Sat 13 6.30pm	Sun 14 10.30am
Tue 16 1.15pm	Wed 17 4pm	Thu 18 6.30pm	Fri 19 10.15am	Sat 20 1.30pm	Sun 21 4pm
Tue 23 6.30pm	Wed 24 10.15am	Thu 25 1.30pm	Fri 26 4pm	Sat 27 6.30pm	Sun 28 10.15am

DIARY

Thu 4 – Sun 28 Aug

EAVESDROPPING (WALK THIS PLAY®)

Location: Audio walking tour, starting point at the Traverse Theatre.
Available every day at any time when using your own equipment, or book equipment through the Traverse Box Office for use at 11.15am, 2.15pm and 6.45pm daily.

Captions can be accessed for all users.

ACCESS KEY

CAP Captioned **AD** Audio described  British Sign Language **R** Relaxed performance

Further and additional access performances for some productions can be found on our website at traverse.co.uk/whats-on/access-listings

TRAVERSE 1	TRAVERSE 2	ACCESS PERFORMANCES
Saturday 30 July		
	This is Paradise, 7pm P	Eavesdropping, all day CAP
Sunday 31 July		
Exodus, 7pm P		Eavesdropping, all day CAP
Monday 1 August		
		Eavesdropping, all day CAP
Tuesday 2 August		
Blood Harmony, 7pm P		Eavesdropping, all day CAP
Thursday 4 August		
The Last Return, 7pm P	Happy Meal, 10.30am P This is Paradise, 1pm P Bloody Elle, 3.30pm P Psychodrama, 6.30pm P	Eavesdropping, all day CAP
Friday 5 August		
Wilf, 7pm P	Happy Meal, 10.30am This is Paradise, 1pm Bloody Elle 3.30pm Psychodrama, 6.30pm	Eavesdropping, all day CAP
Saturday 6 August		
Wilf, 11am P Exodus, 2.30pm P Blood Harmony, 6pm P The Last Return, 9.30pm P	Psychodrama, 10.30am Happy Meal, 1pm This is Paradise, 3.30pm Bloody Elle, 6.30pm	Eavesdropping, all day CAP
Sunday 7 August		
The Last Return, 11am Exodus, 2.30pm Wilf, 6pm Blood Harmony, 9.30pm	Bloody Elle, 10.30am Psychodrama, 1pm Happy Meal, 3.30pm This is Paradise, 6.30pm	Eavesdropping, all day CAP

DIARY

Thu 4 – Sun 28 Aug

EAVESDROPPING (WALK THIS PLAY®)

Location: Audio walking tour, starting point at the Traverse Theatre.
Available every day at any time when using your own equipment, or book equipment through the Traverse Box Office for use at 11.15am, 2.15pm and 6.45pm daily.

TRAVERSE 1	TRAVERSE 2	ACCESS PERFORMANCES
Monday 8 August		
		Eavesdropping, all day
Tuesday 9 August		
Shedinburgh, 10am Blood Harmony, 12pm Wilf, 3pm Exodus, 6pm The Last Return, 9.15pm	This is Paradise, 11am Bloody Elle, 1.30pm Psychodrama, 4pm Happy Meal, 6.30pm ALOK, 9pm	Exodus, 6pm, Audio Described (T1) Eavesdropping, all day
Wednesday 10 August		
Shedinburgh, 10am The Last Return, 12pm Blood Harmony, 3pm Wilf, 6pm Exodus, 9.15pm	Happy Meal, 10.30am This is Paradise, 1pm Bloody Elle, 3.30pm Psychodrama, 6.30pm ALOK, 9pm	Eavesdropping, all day
Thursday 11 August		
Shedinburgh, 10am Exodus, 12pm The Last Return, 3pm Blood Harmony, 6pm Wilf, 9.15pm	Psychodrama, 11am Happy Meal, 1.30pm This is Paradise, 4pm Bloody Elle, 6.30pm ALOK, 9pm	ALOK, 9pm, BSL (T2) Eavesdropping, all day
Friday 12 August		
Shedinburgh, 10am Wilf, 12pm Exodus, 3pm The Last Return, 6pm Blood Harmony, 9.15pm	Bloody Elle, 11am Psychodrama, 1.30pm Happy Meal, 4pm This is Paradise, 6.30pm ALOK, 9pm	Eavesdropping, all day
Saturday 13 August		
Shedinburgh, 10am Blood Harmony, 12pm Wilf, 3pm Exodus, 6pm The Last Return, 9.15pm	This is Paradise, 11am Bloody Elle, 1.30pm Psychodrama, 4pm Happy Meal, 6.30pm ALOK, 9pm	Eavesdropping, all day
Sunday 14 August		
Shedinburgh, 10am The Last Return, 12pm Blood Harmony, 3pm Wilf, 6pm Exodus, 9.15pm	Happy Meal, 10.30am This is Paradise, 1pm Bloody Elle, 3.30pm Psychodrama, 6.30pm ALOK, 9pm	Eavesdropping, all day

DIARY

Thu 4 – Sun 28 Aug

EAVESDROPPING (WALK THIS PLAY®)

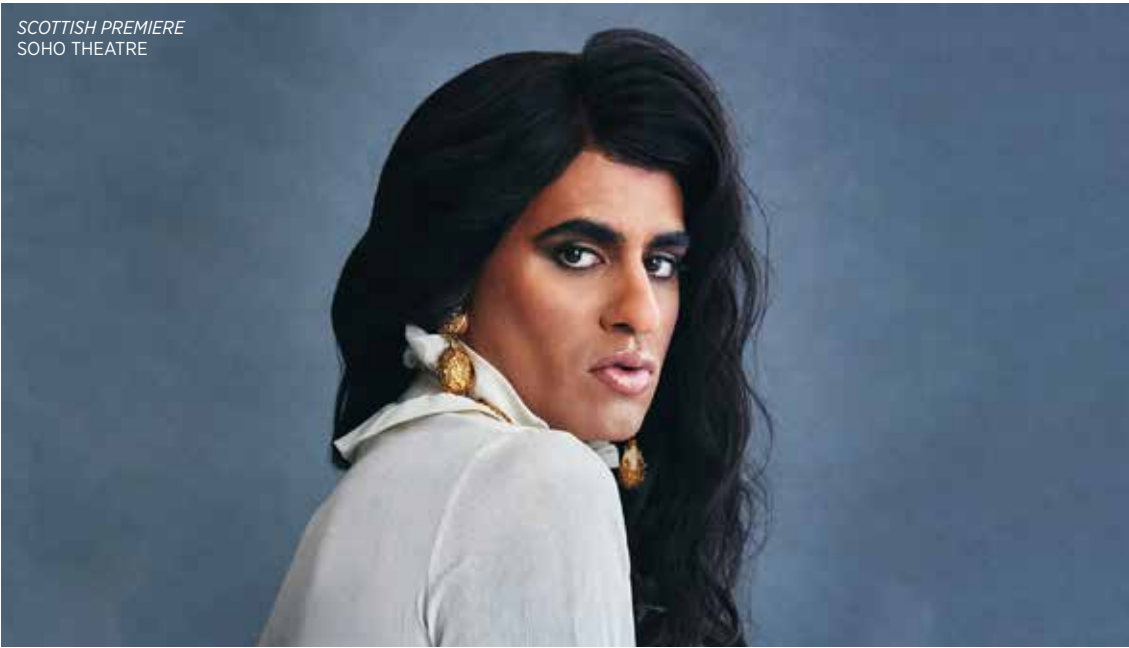
Location: Audio walking tour, starting point at the Traverse Theatre.
Available every day at any time when using your own equipment, or book equipment through the Traverse Box Office for use at 11.15am, 2.15pm and 6.45pm daily.

TRAVERSE 1	TRAVERSE 2	ACCESS PERFORMANCES
Monday 15 August		
	Talk and networking event: Creating Space with Playwrights' Studio, Scotland, 11am BAR: MyTraverse sharing session, 2pm BAR: MyTraverse launch event, 4pm	Eavesdropping, all day
Tuesday 16 August		
Exodus, 10.30pm The Last Return, 1.30pm Blood Harmony, 4.30pm Wilf, 7.30pm One-Woman Show, 10pm	Psychodrama, 11am Happy Meal, 1.15pm This is Paradise, 4pm Bloody Elle, 6.30pm ALOK, 9pm	Eavesdropping, all day
Wednesday 17 August		
Wilf, 10.30am Exodus, 1.15pm The Last Return, 4.30pm Blood Harmony, 7.30pm One-Woman Show, 10pm	Bloody Elle, 11am Psychodrama, 1.30pm Happy Meal, 4pm This is Paradise, 6.30pm ALOK, 9pm	Exodus, 1.15pm, BSL (T1) This Is Paradise, 6.30pm, BSL (T1) Eavesdropping, all day
Thursday 18 August		
Blood Harmony, 10.30 am Wilf, 1.45pm Exodus, 4.30pm The Last Return, 7.30pm One-Woman Show, 10pm	This is Paradise, 11am Bloody Elle, 1.30pm Psychodrama, 4pm Happy Meal, 6.30pm ALOK, 9pm	Exodus, 4.30pm, Captioned (T1) Eavesdropping, all day
Friday 19 August		
The Last Return, 10.30am Blood Harmony, 1.30pm Wilf, 4.30pm Exodus, 7.30pm One-Woman Show, 10pm	Happy Meal, 10.15am This is Paradise, 1pm Bloody Elle, 3.30pm Psychodrama, 6.30pm ALOK, 9pm	Wilf, 4.30pm, Audio Described & BSL (T1) Exodus, 7.30pm, Audio Described (T1) Eavesdropping, all day
Saturday 20 August		
Exodus, 10.30pm The Last Return, 1.15pm Blood Harmony, 4.30pm Wilf, 7.30pm One-Woman Show, 10pm	Psychodrama, 11am Happy Meal, 1.30pm This is Paradise, 4pm Bloody Elle, 6.30pm ALOK, 9pm	Exodus, 10.30am, Relaxed Performance (T1) Eavesdropping, all day
Sunday 21 August		
Wilf, 10.30am Exodus, 1.15pm The Last Return, 4.30pm Blood Harmony, 7.30pm One-Woman Show, 10pm	Bloody Elle, 11am Psychodrama, 1.30pm Happy Meal, 4pm This is Paradise, 6.30pm ALOK, 9pm	Eavesdropping, all day

DIARY

Thu 4 – Sun 28 Aug
EAVESDROPPING (WALK THIS PLAY®)
Location: Audio walking tour, starting point at the Traverse Theatre.
Available every day at any time when using your own equipment, or book equipment through the Traverse Box Office for use at 11.15am, 2.15pm and 6.45pm daily.

TRAVERSE 1	TRAVERSE 2	ACCESS PERFORMANCES
Monday 22 August		
Reading: The Grand Opera House Hotel, 7pm Panel and Q&A: The Writer-Composer Relationship, 8pm	Screening: Move, 4pm	Eavesdropping, all day CAP
Tuesday 23 August		
Blood Harmony, 10.30 am Wilf, 1.45pm Exodus, 4.30pm The Last Return, 7.30pm One-Woman Show, 10pm	This is Paradise, 11am Bloody Elle, 1.30pm Psychodrama, 4pm Happy Meal, 6.30pm	Exodus, 4.30pm, BSL (T1) CAP Eavesdropping, all day CAP
Wednesday 24 August		
The Last Return, 10.30am Blood Harmony, 1.30pm Wilf, 4.30pm Exodus, 7.30pm One-Woman Show, 10pm	Happy Meal, 10.15am This is Paradise, 1 pm Bloody Elle, 3.30pm Psychodrama, 6.30pm	Exodus, 7.30pm, Captioned (T1) CAP Eavesdropping, all day CAP
Thursday 25 August		
Exodus, 10.30pm The Last Return, 1.15pm Blood Harmony, 4.30pm Wilf, 7.30pm One-Woman Show, 10pm	Psychodrama, 11am Happy Meal, 1.30pm This is Paradise, 4pm Bloody Elle, 6.30pm	This is Paradise, 4pm, Audio Described (T1) AD Eavesdropping, all day CAP
Friday 26 August		
Wilf, 10.30am Exodus, 1.15pm The Last Return, 4.30pm Blood Harmony, 7.30pm One-Woman Show, 10pm	Bloody Elle, 11am Psychodrama, 1.30pm Happy Meal, 4pm This is Paradise, 6.30pm	Eavesdropping, all day CAP
Saturday 27 August		
Blood Harmony, 10.30am Wilf, 1.45pm Exodus, 4.30pm The Last Return, 7.30pm One-Woman Show, 10pm	This is Paradise, 11am Bloody Elle, 1.30pm Psychodrama, 4pm Happy Meal, 6.30pm	Exodus, 4.30pm, Relaxed Performance (T1) R Eavesdropping, all day CAP
Sunday 28 August		
The Last Return, 10.30am Blood Harmony, 1.30pm Wilf, 4.30pm Exodus, 7.30pm One-Woman Show, 10pm	Happy Meal, 10.15am This is Paradise, 1pm Bloody Elle, 3.30pm Psychodrama, 6.30pm	Eavesdropping, all day CAP



ALOK
By ALOK

Writer & Performer Alok Vaid-Menon

Tue 9 – Sun 21 Aug
Preview Tue 9 Aug

Preview tickets
Full price £17
Standard concession £12

Tickets
Full price £22
Standard concession £17
Under 30s / Student £15
Unwaged £5

RUNNING TIME: 1h
NOTE: Strong language, adult themes, violence to self, discussion of suicide in poetry, transmisogyny.

T2 AGES 18+ E1 FREE

COMEDY SPOKEN WORD

LGBTQI+

ALOK (they/them) is an internationally acclaimed writer, performer and public speaker. This is their new comedy and poetry show.

A mixed-media artist, ALOK’s work explores themes of trauma, belonging and the human condition. They are also the author of *Femme in Public* (2017), *Beyond the Gender Binary* (2020) and *Your Wound/My Garden* (2021), and have been honoured as one of HuffPo’s Culture Shifters and NBC’s Pride 50.

For access performances, see the Diary on pages 14-17.

‘Moves seamlessly among poetry, comedy, fashion and writing’
THE NEW YORK TIMES
‘Fierce, poetic beauty... the way they threaded together movement, poetry, technology and music reverberated long afterward’
THE HUFFINGTON POST

P Tue 9 9pm	Wed 10 9pm	Thu 11 9pm	Fri 12 9pm	Sat 13 9pm	Sun 14 9pm
Tue 16 9pm	Wed 17 9pm	Thu 18 9pm	Fri 19 9pm	Sat 20 9pm	Sun 21 9pm



BLOODY ELLE - A GIG MUSICAL

By Lauryn Redding

Writer & Performer Lauryn Redding **Director** Bryony Shanahan **Lighting Design** Mark Distin Webster
Sound Design & Composition Alexandra Faye Braithwaite

Thu 4 - Sun 28 Aug
Preview Thu 4 Aug

Preview tickets
Full price £17
Standard concession £12

Tickets
Full price £22
Standard concession £17
Under 30s / Student £15
Unwaged £5

RUNNING TIME: 1h30m

NOTE: Some full black outs. Performer interacts and encourages interaction with the audience. Strong language.



LGBTQI+ LIVE MUSIC

GIG THEATRE

Elle meets Eve. The world spins on its axis. Her eyes are green like guacamole, she has posh-hair and a freckle on her chin and when she touches Elle's arm... This heart-warmingly honest and belly aching funny love story is stuffed full of those stomach-flipping-time-stopping moments. It's brutal and beautiful. It's a "moment moment."

Bloody Elle is full of searing original music, performed live, building loops and layers of sound that make you feel like there is a ten-piece band on stage, transporting the audience to a sweaty, packed out gig in the back of a pub or a 10,000 seat arena.

For access performances, visit traverse.co.uk/whats-on/access-listings

'It's a performance that fills every last inch of the auditorium, which buzzes with energy' ★★★★★ THE GUARDIAN

'A warm-hearted, embrace bit of gig theatre' ★★★★★ THE STAGE

		P Thu 4 3.30pm	Fri 5 3.30pm	Sat 6 6.30pm	Sun 7 10.30am
Tue 9 1.30pm	Wed 10 3.30pm	Thu 11 6.30pm	Fri 12 11am	Sat 13 1.30pm	Sun 14 3.30pm
Tue 16 6.30pm	Wed 17 11am	Thu 18 1.30pm	Fri 19 3.30pm	Sat 20 6.30pm	Sun 21 11am
Tue 23 1.30pm	Wed 24 3.30pm	Thu 25 6.30pm	Fri 26 11am	Sat 27 1.30pm	Sun 28 3.30pm



Image: The Other Richard / Russell Warren-Fisher

PSYCHODRAMA

By Matt Wilkinson

Performer Emily Bruni **Director** Matt Wilkinson **Set Design** James Turner **Lighting Design** Elliot Griggs
Sound Design Gareth Fry **Producer** Pádraig Cusack

Thu 4 - Sun 28 Aug
Preview Thu 4 Aug

Preview tickets
Full price £17
Standard concession £12

Tickets
Full price £22
Standard concession £17
Under 30s / Student £15
Unwaged £5

RUNNING TIME: 1h

NOTE: Strong language. Strictly no latecomers.



POLITICAL SATIRE DRAMA
THRILLER

Dress by Ganni. Bra by Coco de Mer. Knife by Stanley.

A gripping, at times hilarious revenge tale about an actress in her 40's under investigation for the murder of an auteur theatre director. Set against the backdrop of a stage production of Hitchcock's *Psycho*, Emily Bruni (*Peep Show*) plunges us into the dark heart of show business.

Nominated for two Off West End Theatre Awards.

'Pitch perfect... if this dazzling monologue play and Bruni's star turn are not nominated for any theatre prizes this year, I'll be very surprised' ★★★★★ CAMDEN NEW JOURNAL

'Emily Bruni gives a powerhouse performance; it's a role to relish which she seizes with everything she has' ★★★★★ REVIEWSGATE

		P Thu 4 1pm	Fri 5 6.30pm	Sat 6 10.30am	Sun 7 1pm
Tue 9 4pm	Wed 10 6.30pm	Thu 11 11am	Fri 12 1.30pm	Sat 13 4pm	Sun 14 6.30pm
Tue 16 11am	Wed 17 1.30pm	Thu 18 4pm	Fri 19 6.30pm	Sat 20 11am	Sun 21 1.30pm
Tue 23 4pm	Wed 24 6.30pm	Thu 25 11am	Fri 26 1.30pm	Sat 27 4pm	Sun 28 6.30pm



Image: Shutterstock

EAVESDROPPING (WALK THIS PLAY®)

By Hannah Lavery & Sarah MacGillivray

Director Jonnie Riordan **Composer & Sound Designer** Finn Anderson **Cast** Saskia Ashdown, Reuben Joseph, Sally Reid, Julie Wilson Nimmo

Fri 5 – Sun 28 Aug

Tickets

Full price £12
Standard concession £10
Under 30s / Student £8
Unwaged £5

Times

Available all day.
Smartphones and headphones available to use for free daily at 11.15am, 2.15pm and 6.45pm.

RUNNING TIME: 1h10m

NOTE: All walks are outdoors, so wear comfy shoes and suitable clothes for the weather. Some inclines, but no steps.

D/deaf audiences can choose to use the in-app captions.

Don your headphones and get ready to eavesdrop in this latest solo audio experience from ThickSkin (*Blood Harmony*, *How Not to Drown*). Celebrating the stories and people who are the heartbeat and spirit of Edinburgh, Eavesdropping asks who gets to define a city, who gets to be its guide and whose story matters.

Eavesdropping takes audiences on an adventure through familiar and unfamiliar streets in Scotland's capital, revealing new sides to and stories of the people who (may) live here. This location-based walking audio play by Hannah Lavery (*The Drift*) and Sarah MacGillivray (Traverse Young Writers alumni), the latest in ThickSkin's *Walk This Play®* series, will encourage audiences to look differently at the rich tapestry of people you may walk past every day, whether you notice them or not.

Through narration and original music blended with the sights and sounds around you, Eavesdropping takes you on a journey of imagination and discovery, where the audience is central to the action.

You will need headphones and a smartphone to take part in this performance. You can use your own at any time, or book to borrow equipment from the Traverse Box Office at 11.45am, 2.15pm and 6.45pm each day.



PROMENADE

DRAMA

EDINBURGH

AUDIO



SHEDINBURGH LIVE: THE SHED GALA

Tue 9 – Sun 14 Aug

Tickets

Full price £22
Standard concession £17
Under 30s / Student £15
Unwaged £5

To explore other Shedinburgh events including Shedinburgh Newcomers, ShedX and the full online festival visit shedinburgh.com

RUNNING TIME: 1h



COMEDY

DRAMA

SHEDINBURGH is back!

The hugely popular SHEDINBURGH FRINGE FESTIVAL which launched online during 2020 is going live and in person for the first time ever. Featuring an all-star programme of the best of the fringe stalwarts in theatre and comedy.

SHEDINBURGH will host six very special gala performances in Traverse 1 all in aid of the SHED LOAD OF FUTURE FUND which was set up to support the next generation of artists to make work at the Fringe in the future. Supporting and championing a more accessible, diverse, and inclusive Fringe.

Since it launched in 2020 SHEDINBURGH has featured performances from Ahir Shah, Deborah Frances-White, Inua Ellams, Mark Thomas, Nassim Soleimanpour, Robert Softley, Rosie Jones, Simon Callow, Tim Crouch and Tobias Menzies.

All performances will be captured live on camera for streaming as part of SHEDINBURGH's online programme.

For the full programme of performances please visit traverse.co.uk/whats-on

'Shedinburgh Fringe Festival is one of the most talked about elements of this year's virtual Edinburgh Fringe'

THE STAGE (2020)

Tue 9 10am	Wed 10 10am	Thu 11 10am	Fri 12 10am	Sat 13 10am	Sun 14 10am
---------------	----------------	----------------	----------------	----------------	----------------

Class Act

DONATE TO THE TRAVERSE TODAY.

Help us to discover & develop creativity in those who tell stories we all want - and need - to hear.

£20

Helps buy a sound effects audio library to bring digital stories to life

£10

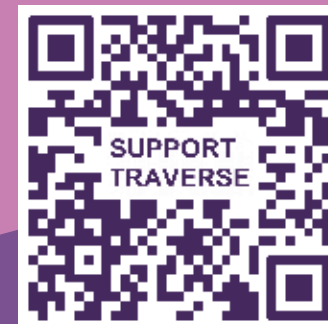
Helps pay for a Class Act script anthology for a young participant

£5

Helps buy a stage prop for our in-person performances

Class Act gives young people the tools to craft their own stories, in their own words. Creating live and digital performances in collaboration with the finest theatre makers in Scotland today, they create brand new, riotously funny, and achingly poignant work that inspires and entertains us all.

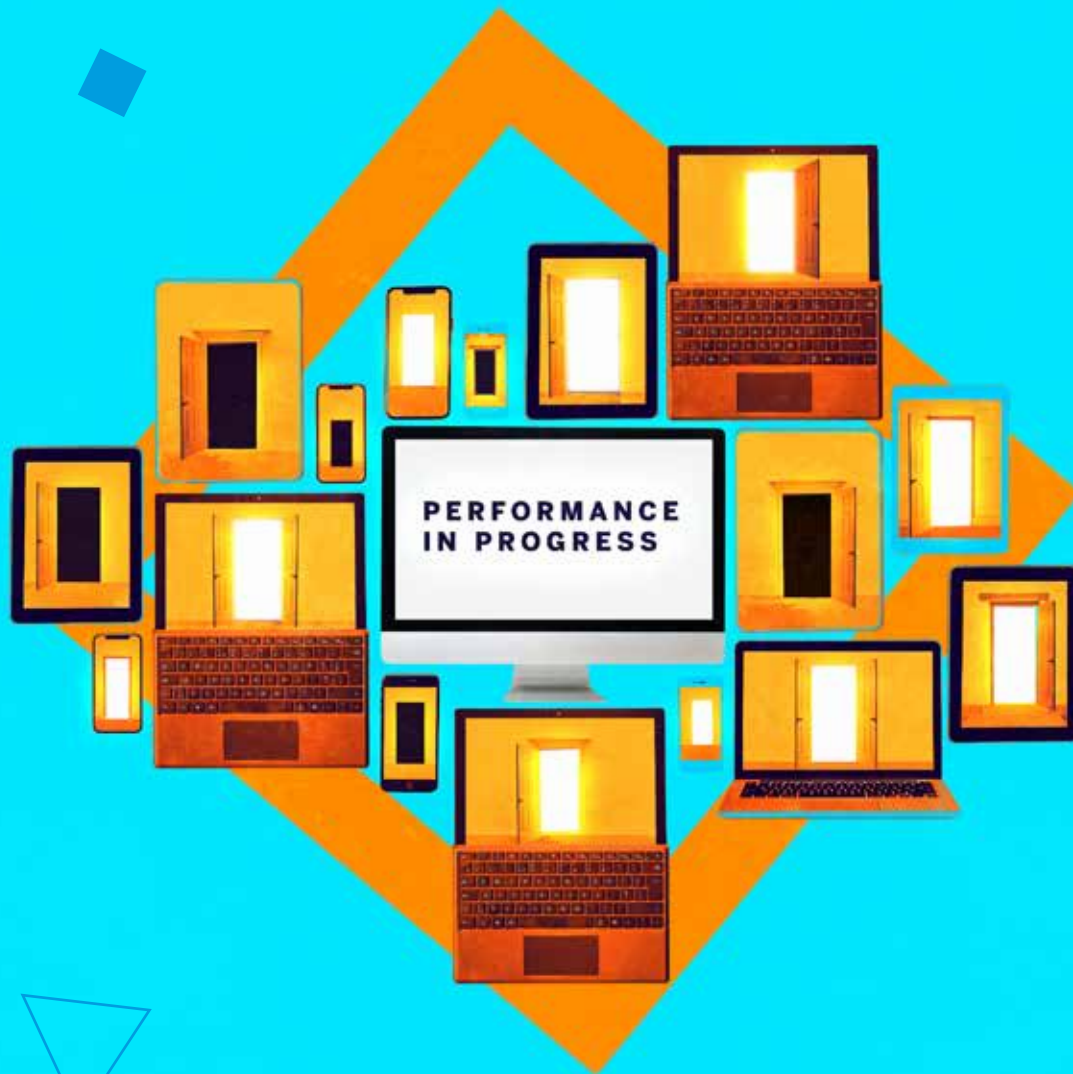
For over 30 years the Traverse has been delivering Class Act in Edinburgh – alongside a few stops around the globe, including in Ukraine and India - and now we're ready to hit the road once more. Over the next two years we'll be touring across Scotland, taking residence in regional hubs to support young people nationwide to tell their stories. We can't wait to share their work with you.



giftaid it

Add 25% more to your donation at no extra cost to you.

WANT MORE FROM THE TRAVERSE?



Join us for workshops, shows, readings, interactive experiences, podcasts, Q&As and more, all year round in our online venue, **Traverse 3**.



See what's on now and keep an eye out for new additions throughout the year

traverse.co.uk/whats-on/traverse-3

OTHER WAYS TO SUPPORT



In addition to seeing a show there are lots of ways you can support the Traverse and our work...

ENJOY A DRINK AT THE TRAVERSE BAR

Open 9.30am – late every day of TravFest22

Every pint pulled and wine poured helps to support our creative development work and get new plays from page to stage.

This August we're delighted to welcome the delicious Captain Karaage, who will be providing light bites and tasty meals throughout the day.

INDULGE YOURSELF IN OUR SCRIPT SHOP

Available on our website and from our Box Office, treat your brain with scripts from our TravFest22 shows as well as many excellent past productions.

Have a browse at traverse.co.uk/shop

JOIN THE CONVERSATION ON SOCIAL MEDIA

Do you love our work? Help spread the word about our work by liking, re-tweeting and sharing the buzz about the Traverse:

 [@traversetheatre](https://twitter.com/traversetheatre)

 [/TraverseTheatre](https://www.facebook.com/TraverseTheatre)

 [@traversetheatre](https://www.instagram.com/traversetheatre)

MAKING MONDAYS

Join us on Mondays for a first look at some projects destined for future TravFests, and a series of events shedding light on aspects of theatremaking in collaboration with Playwrights' Studio, Scotland.

MONDAY 15 AUG



11AM: TALK AND NETWORKING EVENT

CREATING SPACE WITH PLAYWRIGHTS' STUDIO, SCOTLAND

Free (but ticketed)

Join Playwrights' Studio for Creating Space, an opportunity to chat with peers, meet new people and make connections with other playwrights. Featuring playwright Oliver Emanuel. Tea and coffee provided.



2PM: DROP IN

MYTRAVERSE SHARING SESSION

Free

Get a preview of the Traverse's exciting 60th anniversary digital project, MyTraverse, and share your memories and memorabilia. More details on p30.

4PM: LAUNCH

MYTRAVERSE LAUNCH EVENT

Free (but ticketed)

The official launch of MyTraverse, and an opportunity to find out about the development of this groundbreaking new project, as well as explore what's on offer for yourself.

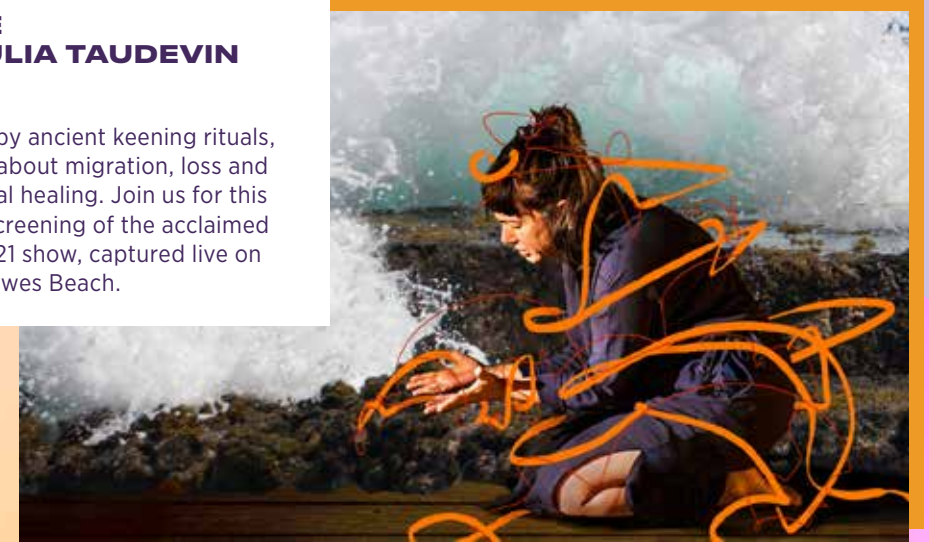
MONDAY 22 AUG

4PM: SCREENING

MOVE BY JULIA TADEVIN

£5

Inspired by ancient keening rituals, *MOVE* is about migration, loss and communal healing. Join us for this special screening of the acclaimed TravFest21 show, captured live on Silverknowes Beach.



7PM: FIRST LOOK READING

THE GRAND OPERA HOUSE HOTEL BY ISOBEL MCARTHUR

£5

Your very first chance to experience an excerpt from Olivier Award-winning writer Isobel McArthur's new Traverse commissioned play, with music from MJ McCarthy.

8PM: PANEL AND Q&A

THE WRITER-COMPOSER RELATIONSHIP WITH PLAYWRIGHTS' STUDIO, SCOTLAND

£4 or free to 7PM: FIRST LOOK READING bookers

A panel of writers and composers, including Isobel McArthur and MJ McCarthy, discuss and answer questions about the unique relationship between playwrights and composers.

BOOK NOW

Find out more and book for all these events at traverse.co.uk/making-mondays

CAN YOU HELP US TELL THE TRAVERSE'S STORY?

The Traverse turns 60 years new in 2023, and to mark the occasion we're launching MyTraverse, our exciting new digital space. There you can explore some of our most remarkable moments, acclaimed productions, insightful archive material, and get a glimpse into the spaces and work you don't usually see from your seat.



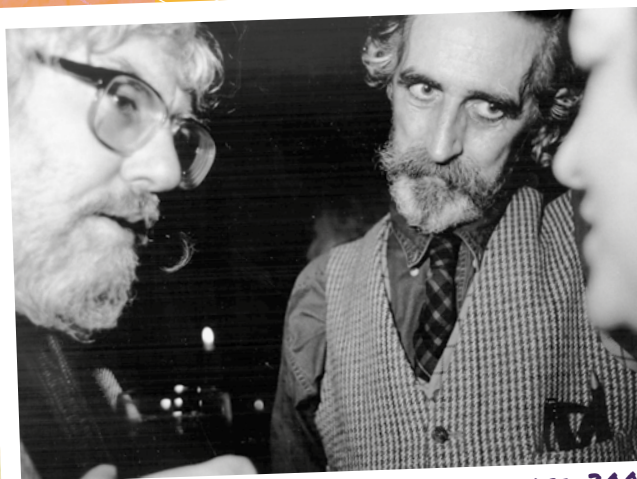
TRAVERSE THEATRE STAFF, 1975

And we can't tell our full story without the audiences who have been at our heart since day one. If you have tales to tell of your times at the Trav, or material connected to us that's languishing in a corner of your attic, we'd love to know!

Join our archive drop in session to share your memories and memorabilia, or get a first look at this innovative project, where you can discover our history – and future – for yourself.



SIOBHAN REDMUND IN PERFECT DAYS
POSTER, 1998



JOHN BYRNE IN THE TRAVERSE, 2002



TILDA SWINTON IN WHITE ROSE, 1985
BY PETER ARNOTT PHOTO: DAVID LIDDLE



CLASS ACT, 2021



TRAVERSE, GRASSMARKET

JOIN OUR DROP IN SESSION...

MON 15 AUG, 2-4PM
TRAVERSE BAR

Free

Or keep an eye on traverse.co.uk/whats-on for your opportunity to experience MyTraverse at home.

Supported by Creative Informatics, and developed in collaboration with Cadpeople.

ACCESS

Copies of this brochure and an access guide are available in large print and audio formats from the Traverse Box Office.

ACCESS – THE BUILDING

From the Cambridge Street entrance there is level access to the Box Office. There is lift access to the Bar Café and theatres, and adapted toilets on the Box Office and Bar Café levels. Guide and hearing dogs are welcome.

Please mention when booking if you require lift access to Traverse 1 or Traverse 2, and make yourself known to Front of House staff on arrival.

COMPANION SERVICE

Artlink offers a companion service for people who have difficulty attending performances on their own. For more information, please phone **0131 229 3555** or visit artlinkedinburgh.co.uk

WHEELCHAIR USERS

There are wheelchair spaces available in both theatres – please reserve when making your booking. Easily accessible seating can be reserved for audience members who prefer to transfer from a wheelchair to a seat.

ACCESSIBLE PERFORMANCES

If you would like to use any of the following services, please let the Box Office know at the time of booking and make yourself known to the Front of House team on arrival, as they will be expecting you.

CAPTIONED PERFORMANCES

CAP The actors' words appear on a display unit (or units) placed on the set or next to the stage at the same time as they are spoken or sung.

AUDIO DESCRIBED PERFORMANCES

AD Audio description is a way of communicating the visual elements of a production for visually impaired audience members. Information is relayed as a live commentary to a personal headset. Please collect this from a member of the Front of House team from 30 minutes before the performance.

TOUCH TOURS

TT Touch tours give a guided tour of the stage set to visually impaired audience members prior to the start of an audio described performance.

BSL INTERPRETED PERFORMANCES

BSL An interpreter stands at the side of the stage and interprets dialogue, songs and sound effects for deaf audience members.

HEARING ENHANCEMENT

HE Hearing enhancement supplies amplified sound to a personal headset. Please collect this from a member of the Front of House team from 30 minutes before the performance. This service is suitable for audience members with low to moderate hearing loss and can be used in conjunction with existing hearing aids.

RELAXED PERFORMANCES

R These are designed for audience members with a range of additional support needs, including autism spectrum conditions, learning disabilities and anyone who may benefit from a more relaxed environment when visiting the theatre.

For more details on the arrangements for Relaxed Performances for productions in the TravFest22 programme, please contact the Traverse Box Office.

WITH THANKS

The Traverse Theatre would like to thank the following organisations and individuals for their significant contribution to our work year round.

PARTNER ORGANISATIONS

The Traverse Theatre works regularly with partners and collaborators, including:

Adelaide Festival	Edinburgh International Festival	Napier University
Auckland Arts Festival	Edinburgh International Film Festival	Made in Scotland Showcase
A Play, A Pie and A Pint, Òran Mór	Edinburgh International Science Festival	Pitlochry Festival Theatre
Battersea Arts Centre	Edinburgh Lighting and Sound School	Playwrights' Studio Scotland
BBC Writersroom	EPAD	Puppet Animation Scotland
BBC World Service	English Touring Theatre	Queen Margaret University
Black Lives Matter Mural Trail	Federation of Scottish Theatre	RAGE Theatre, Mumbai
British Council	Film 4	Roots Touring
Cadpeople	Framework Theatre	Royal Conservatoire of Scotland
CAPACOA – Canadian Association for the Performing Arts	HighTide	Royal Exchange Theatre
Capital Theatres	Imaginate / Edinburgh International Children's Festival	Royal Lyceum Theatre
Citizens Theatre	Irish Consulate, Edinburgh	Scottish BPOC Writers Network
Cultura Inglesa Festival, Brazil	Intercultural Youth Scotland	Soho Theatre
Culture Ireland	International Incidents	Soundhouse / Tradfest
Creative Informatics	Lawrence Batley Theatre	Stellar Quines
Dance Base	Lung Ha	ThickSkin
Druid	Lyric Theatre, Belfast	Theatre Royal Plymouth
Dundee Rep	Lyra	Theatre Uncut
Edinburgh College	Luminate	Tron Theatre
Edinburgh College of Art	National Theatre of Great Britain	The University of Edinburgh
Edinburgh Cultural Venues Group	National Theatre of Scotland	Wonder Fools
Edinburgh Futures Institute		Youth Theatre Arts Scotland

The Traverse Theatre extends grateful thanks to all those who generously support our work, including those who prefer their support to remain anonymous

TRAVERSE THEATRE SUPPORTERS

Diamond	Alan and Penny Barr, Katie Bradford, Kirsten Lamb, David Rodgers
Platinum	Judy & Steve, Angus McLeod, Iain Millar, Mike & Carol Ramsay
Gold	Roger & Angela Allen, Carola Bronte-Stewart, Iona Hamilton
Silver	Bridget M. Stevens, Allan Wilson, Gaby Thomson, Chris & Susan Gifford, Lesley Preston
Bronze	Barbara Cartwright, Alex Oliver & Duncan Stephen, Patricia Pugh, Beth Thomson, Julia & David Wilson, Stephanie & Neil, Drs Urzula & Michael Glienecke, Viv Phillips, Jon Best

TRUSTS AND FOUNDATIONS

Anderson Anderson & Brown Charitable Initiative	Murdoch Forrest Charitable Trust	The Noël Coward Foundation
Arnold Clark Community Fund	RKT Harris Charitable Trust	The Paul Hamlyn Foundation
Backstage Trust	The David and June Gordon Memorial Trust	The Robert Haldane Smith Charitable Foundation
British Council Scotland	The Foyle Foundation	The Robertson Trust
Bruce Wake Charitable Trust	The Great Britain Sasakawa Foundation	The Royal Edinburgh Military Tattoo
Cruden Foundation	The JMK Trust	The Russell Trust
D'Oyly Carte Charitable Trust	The JTH Charitable Trust	The Teale Charitable Trust
Dr David Summers Charitable Trust	The Leche Trust	The Turtleton Charitable Trust
Garrick Charitable Trust	The Mackintosh Foundation	The William Syson Foundation
Harold Hyam Wingate Foundation	The McGlashan Charitable Trust	The W M Mann Foundation
Idlewild Trust	The Nancie Massey Charitable Trust	Theatres Trust
John Thaw Foundation	The Nimar Charitable Trust	Unity Theatre Trust

The Traverse is supported by the Performing Arts Venues Relief Fund and Adapt & Thrive, part of the Scottish Government's Community and Third Sector Recovery Programme and delivered in partnership by Firstport, Corra Foundation, SCVO, Just Enterprise, Community Enterprise and Social Investment Scotland.

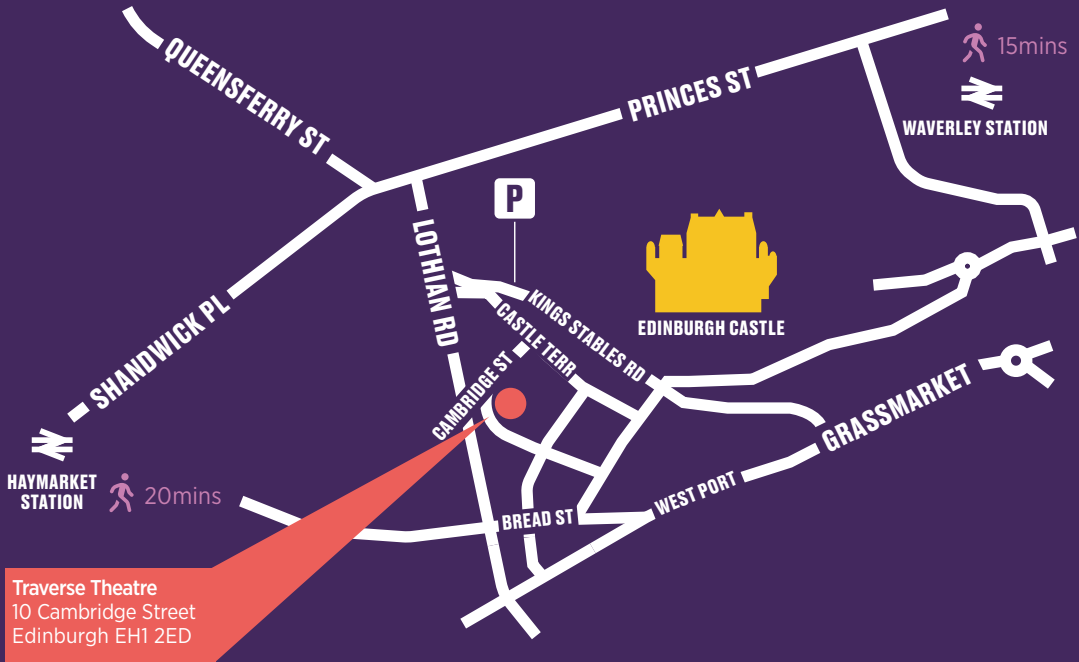
Brochure design everyonelovescake.co.uk

• EDINBURGH •
THE CITY OF EDINBURGH COUNCIL

CREATIVE
LAND
ALBA | CHRUTHACHAIL

THANKS

GETTING HERE



BUSES

Lothian Bus services on Lothian Road.

1, 10, 11, 15, 15A, 16, 22, 24, 25, 30, 34, 36, 47, N8, N16, N22, N30, N31, N34, X25.

LUGGAGE

The Traverse is unable to store large or oversized bags. Items of luggage can not be taken into the theatres. If you have items you wish to leave, we advise using the Left Luggage facility at Waverley Station.

TRAINS

Nearest stations are Waverley Train Station and Haymarket Train Station.

CAR PARKING

Four blue badge bays on Cambridge Street.
A short distance from Castle Terrace Car Park.
Pay & Display on-street parking in surrounding streets.

TAXIS

Drop off point at main entrance to Traverse Theatre.
A short distance from Lothian Road taxi rank, outside the Sheraton Grand Hotel.

Due to tramworks and heavy traffic across the city, please leave plenty of time to travel to the venue before your performance.

traverse.co.uk
0131 228 1404
@traversetheatre



Traverse Theatre (Scotland) is a Limited Company (SC076037) and a Scottish Charity (SC002368) with its registered office at 10 Cambridge Street, Edinburgh, EH1 2ED