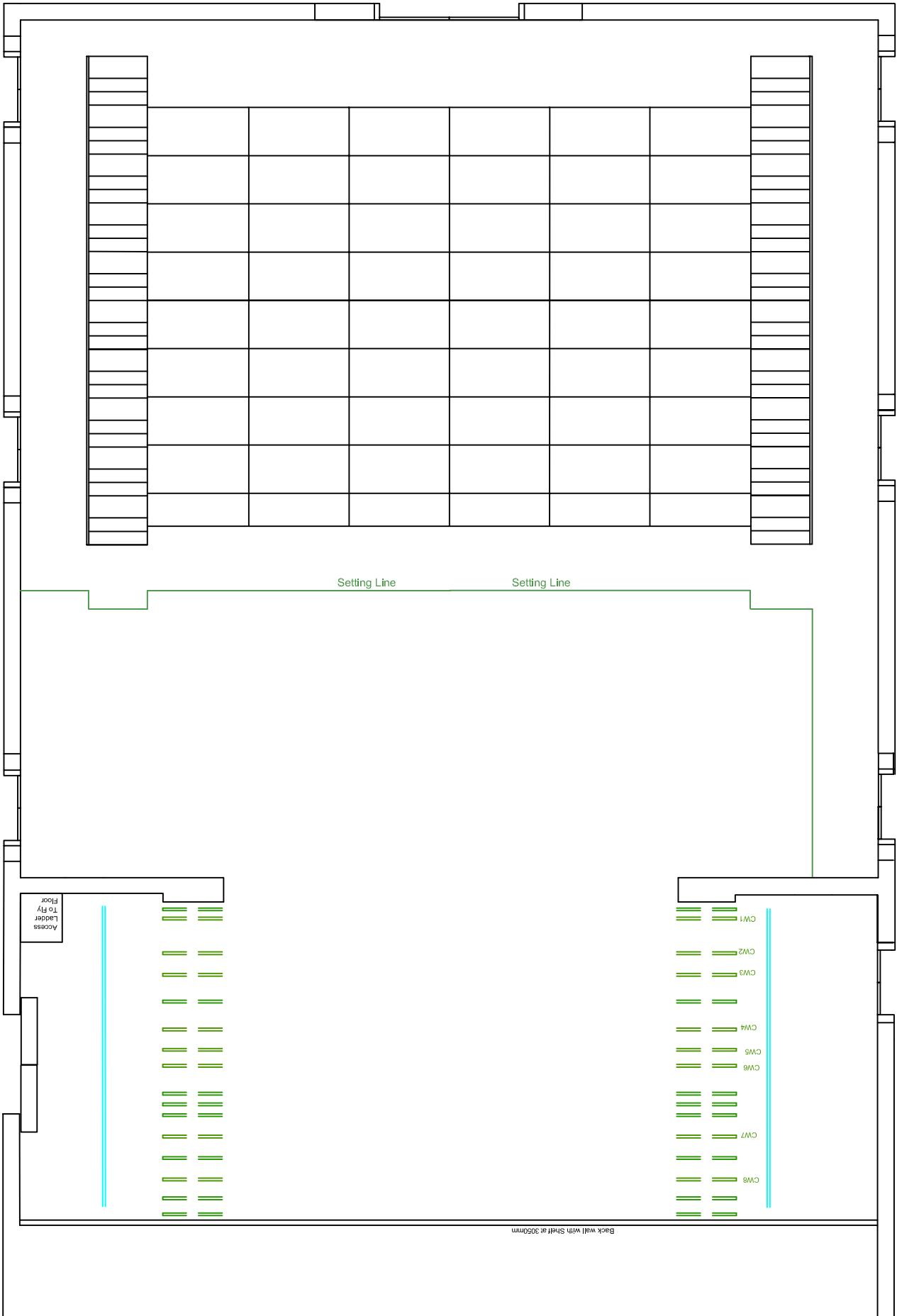


TRAVERSE THEATRE	
SCALE 1:25	
PRODUCTION	
DIRECTOR	
DESIGNER	
LIGHTING DESIGNER	
SOUND DESIGNER	
FIRST PRINT DATE	

TRAVERSE THEATRE	
10 Cambridge Street, Edinburgh, EH1 2ED	
Thistle Theatre 1	Seating Configuration
Scale 1:50	Contact: Gavin Harding - Production Manager Phone: 0131 631 7172 Email: g.harding@traverse.co.uk
Date: 13.2.08	Benji Robinson - CAD Lx Phone: 0131 631 7172 Email: b.rob@traverse.co.uk



End On - 216 Seats